

The Geological Society

servicing science & profession

In conjunction with:



Corporate Supporter:



Call for Abstracts – 29 November 2013

Geometry and Growth of Normal Faults

23 -25 June 2014

The Geological Society, Burlington House, Piccadilly, London

Convenors:

Conrad Childs
University College
Dublin

Caroline Gill
Shell

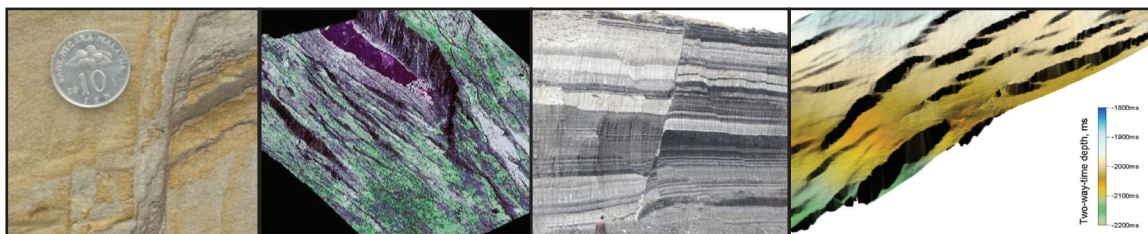
Bob Holdsworth
Durham University

Chris Jackson
Imperial College
London

Tom Manzocchi
University College
Dublin

John Walsh
University College
Dublin

Graham Yielding
Badley Geoscience



The past few decades have seen major advances in our understanding of many aspects of the kinematics of normal fault systems. The analysis of high quality 3D seismic datasets of faulted volumes and detailed outcrop studies, combined with complementary geomechanical modelling, have provided much improved constraints on both the nature and growth of faults and associated fault zones. Recent research progress has benefited from the importance of faulting in a variety of application areas, such as the groundwater, minerals and petroleum industries. In a conference convened on the 25th anniversary of the Geological Society's 1989 'Geometry of Normal Faults' conference, it is intended that the full range of technical issues associated with the growth of normal faults, together with their practical applications, will be covered. The conference is in memory of Juan Watterson, one of the pre-eminent scientists in the field of 3-D fault analysis and modelling.

Contributions are invited on all aspects of normal faults including:

- 3D geometry and kinematics of normal faults
- Internal structure and growth of fault zones
- Deformation within the volume surrounding normal faults
- Fault growth on earthquake through to geological time scales
- Links between the ductile and brittle expression of faults
- Stress- and strain-based methods for analyzing normal fault systems
- Numerical modelling of the geometry and growth of normal fault systems
- Practical application of fault analysis techniques

Confirmed Invited Speakers:

Joe Cartwright - University of Oxford
David Ferrill - Southwest Research Institute, Texas
Haakon Fossen - University of Bergen
James Jackson - University of Cambridge

Andy Nicol - GNS Science, Wellington
David Sanderson - University of Southampton
Janos Urai - RWTH Aachen University
Scott Wilkins - Anadarko

A fieldtrip to the Bristol Channel will follow the meeting (26th-27th June).

Instructions for abstract submission are provided on the conference page of the Geological Society website: www.geolsoc.org.uk/Geometry-and-Growth-of-Normal-Faults. Abstracts should be sent to laura.griffiths@geolsoc.org.uk and copied to conrad.childs@ucd.ie by 29 November.

For further information please contact: Laura Griffiths
The Geological Society, Burlington House, Piccadilly, London W1J 0BG.
T: 020 7432 0980 or email: laura.griffiths@geolsoc.org.uk

Conference Sponsors:



At the forefront of petroleum geoscience

www.geolsoc.org.uk/petroleum